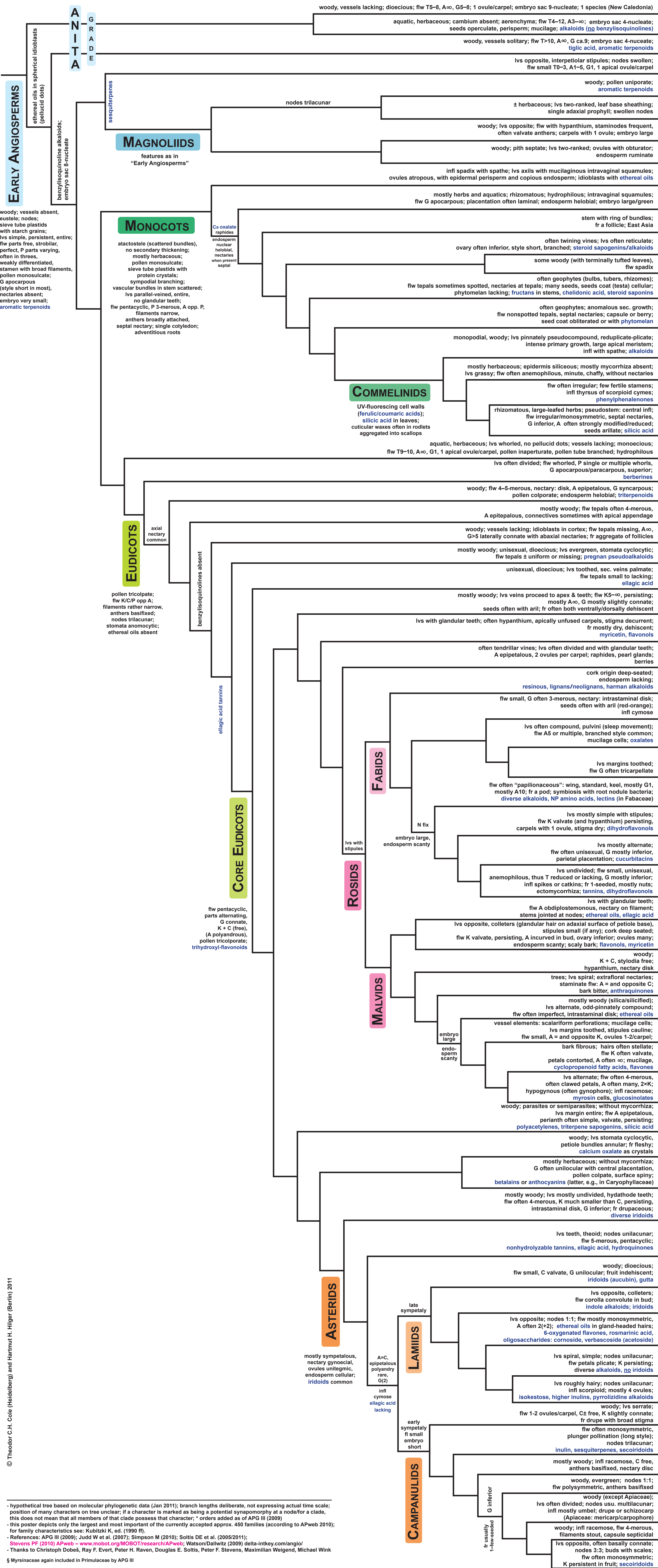


Angiosperm Phylogeny



Flowering Plant Systematics



- hypothetical tree based on molecular phylogenetic data (Jan 2011); branch lengths deliberate, not expressing actual time scale; position of many characters on tree unclear; if a character is marked as being a potential synapomorphy at a node for a clade, this does not mean that all members of that clade possess that character; * orders added as of APG III (2009)

- this poster depicts only the largest and most important of the currently accepted approx. 450 families (according to APWeb 2010); for family characteristics see: Kubitzki K, ed. (1990 ff)

- References: APG III (2009); Judd W et al. (2007); Simpson M (2010); Soltis DE et al. (2005/2011); Stevens PF (2010) APweb - www.mobot.org/MOBOT/research/APweb; Watson/Dalwitz (2009) delta-intkey.com/angio/

- Thanks to Christoph Dobeš, Ray F. Evert, Peter H. Raven, Douglas E. Soltis, Peter F. Stevens, Maximilian Weigend, Michael Wink

§ Myrsinaceae again included in Primulaceae by APG III