



**International Institute for Collaborative Cell Biology and Biochemistry:**

**EMBO-IICCBB School of Science  
From Biochemistry and Molecular Biology Approaches to Systems Biology: Bench to Bedside, Bench to the Field Course.**



**Rio de Janeiro and Búzios – Brazil  
2014, Oct 27th – Nov 7th**

## **Course and Symposium Summary**

**It is our great pleasure to extend to you an invitation to participate in the above EMBO course (Oct 27<sup>th</sup> - 30<sup>th</sup> and Nov 4<sup>th</sup> – 7<sup>th</sup>) and an International Symposium (Oct 31<sup>st</sup> – Nov 2<sup>nd</sup>).**

**The main topic will be Biochemistry and Cell biology – discussed in a relaxed atmosphere with 40 advanced students. We plan to have in Rio two-three 1.5 h lectures each morning and during the afternoon several practical experiments, for groups of five students, given by an investigator who has made important contributions to our understanding of the molecular basis of the cell.**

**Each faculty is going to participate for at least seven days in the course (four days in lab and three days during the Symposium). Students are strongly advised to bring their own samples or data to perform either short experiments or discussion during the course.**

**The Symposium will occur in Armação dos Búzios located in the State of Rio de Janeiro (120 km from Rio). The city will provide a relaxed atmosphere to talk about life sciences. One full day will be dedicated to informal discussion about science and collaborations. We also will have short talk presentations by students during the symposium where recent results can be presented and discussed.**

**Support:**



**Laboratório de Bioquímica de Proteínas  
UNIVERSIDADE FEDERAL DO ESTADO DO RIO DE JANEIRO**



**UNIRIO - Universidade Federal do Estado do Rio de Janeiro**





**International Institute for Collaborative Cell Biology and Biochemistry:**

**EMBO-IICCBB School of Science  
From Biochemistry and Molecular Biology Approaches to Systems Biology: Bench to Bedside, Bench to the Field Course.**



**Rio de Janeiro and Búzios – Brazil  
2014, Oct 27th – Nov 7th**

**Invited Speakers/Teaching Staff:**

Faculty	Affiliation	Topic
Adriana Bassini	Fed. U. of State of Rio de Janeiro	Metabolic assessment of Olympic Athletes
Anibal Magalhães Neto	U. Fed. de . Mato Grosso	Metabolic assessment of Olympic Athletes
Andrea Furtado Macedo	Fed. U. of State of Rio de Janeiro	Developing Better Herbal Medicines in the Post-genomic Era
Cláudia Aiub	Fed. U. of State of Rio de Janeiro	Toxicological Genetics Approaches: from investigations to safe use
Ernesto Carafoli	U. of Padova	Calcium in health and disease.
<b>George Bloom</b>	<b>U. of Virginia</b>	<b>Tau, Lipid Rafts and Alzheimer's Disease.</b>
Greg Gundersen	Columbia U.	Microtubules, cytoskeleton and cell polarity
<b>Igor Jurisica</b>	<b>Princess Margaret Cancer Centre</b>	<b>Integrative computational biology</b>
Igor Stagljar	U. of Toronto	Protein interaction networks regulating cell signaling in cancer.
Javier Ambrozio	U. Nacional Autonoma de Mexico	Immunochemical characterization of cytoskeletal proteins of parasites.
Jeffrey Gerst	Weizmann Institute	Protein and mRNA transport in cell growth and disease
José R. Sotelo	Inst. Invest. Biol. Clemente Estable	Schwann cells provide RNAs and ribosomes to peripheral axons by cell to cell transfer.
José R. Sotelo-Silveira	Inst. Invest. Biol. Clemente Estable	Study of a gene desert associated with prostate, colon and breast cancer.
L. C. Cameron	Fed. U. of State of Rio de Janeiro	Sportomics: Building a new concept using “-omics” sciences.
Maria Gabriela Bello Koblitz	Fed. U. of State of Rio de Janeiro	Food biochemistry
<b>Margaret Titus</b>	<b>U. of Minnesota</b>	<b>The role for a novel myosin in chemotactic signaling</b>
Michael Moran	University of Toronto	Intracellular signaling networks
Mariana S.Larraz Ferreira	Fed. U. of State of Rio de Janeiro	How endosperm cells redox homeostasis influence glutenin polymerization in developing wheat grains
<b>Miguel Roig</b>	<b>St. John's U.</b>	<b>Plagiarism in the sciences</b>
<b>Peter Watt</b>	<b>U. of Brighton</b>	<b>Using metabolites to measure human function and performance</b>
Primal de Lanerolle	U. of Illinois	A pseudogene that regulates the expression of its parent gene in cancer
Rama Khokha	U. of Toronto	Proteolytic factors in exosomes
<b>Thomas Kislinger</b>	<b>U. of Toronto</b>	<b>Novel approaches for the identification of biomarkers of prostate cancer</b>

***Bold Topics are going be assessed in both theoretical and practical courses.***



**International Institute for Collaborative Cell Biology and Biochemistry:**

**EMBO-IICCBB School of Science  
From Biochemistry and Molecular Biology Approaches to Systems Biology: Bench  
to Bedside, Bench to the Field Course.**



**Rio de Janeiro and Búzios – Brazil  
2014, Oct 27th – Nov 7th**

**Main organizer (to whom enquiries may be addressed):**

**L. C. Cameron (Brazil)  
Universidade Federal do Estado do Rio de Janeiro  
Av. Pasteur, 296 – Térreo - Urca  
Rio de Janeiro – Brazil  
CEP 22290-240  
Phone +55 21 2542 5204  
Fax +55 21 2542 5280  
[cameron@unirio.br](mailto:cameron@unirio.br)  
[www.unirio.br/lbp](http://www.unirio.br/lbp)**

**Organizing Committee:**

**International:**

Enrique De La Cruz – Yale University  
Jeffrey Gerst, Weizmann Institute - Israel  
John Mercer - McLaughlin Research Institute – EUA  
Primal de Lanerolle, U. Illinois – Chicago  
Jose Sotelo - Instituto de Investigaciones Biologicas Clemente Estable - Uruguay  
Margaret A. Titus - University of Minnesota – EUA

**Local:**

Adriana Bassini  
Alexandre Magno Vieira França  
Andrea Furtado Macedo  
Maria Gabriela Bello Koblitz  
Mariana Simoes Larraz Ferreira

The course

The main objective of this course is to provide training for students from Latin-American, and other countries, in modern Molecular and Cell Biology research. The course will introduce state-of-the-art methodologies and concepts to students through a combination of practical labs, lectures and participation in a symposium. Strong interactions between students and top researchers from three continents are designed to enhance the training experience. The course will consist of two-three lectures each morning followed by 4-6 hours laboratory sessions each afternoon. Each practical exercise will be led by an investigator who has made important contributions to our understanding of a key cell biological process at the molecular level. Three days will be devoted to a Symposium, where faculty will present their recent results. The small meeting format is designed to stimulate discussion by all participants. Students will be strongly encouraged to present their own work in an oral session. Each faculty member will be present at least for seven days of the course (four lab days and three days in the symposium). A day will be reserved for general discussion.



**International Institute for Collaborative Cell Biology and Biochemistry:**

**EMBO-IICCBB School of Science  
From Biochemistry and Molecular Biology Approaches to Systems Biology: Bench  
to Bedside, Bench to the Field Course.**



**Rio de Janeiro and Búzios – Brazil  
2014, Oct 27th – Nov 7th**

**Application:**

A USD 200 fee will be charged as a registration for the Lectures and the Symposium. A USD 2000 fee will be charged for participants from Industry. Students selected for the practical course (40) will not be charged.

Applications for the practical course should include:

- a) A short CV including list of publications;
- b) A letter of recommendation;
- ;
- c) A cover letter containing some details of previous scientific training and a brief statement indicating how this course will be useful for the applicant;
- d) For foreign students an: statement of international health insurance during the course period (organizers will not be responsible for either health or accidents costs) and
- e) Statement of funding during the course period (for travel and lodging expenses);

After application analysis, the selected students will be evaluated about English skills for a minimal course comprehension.

We will analyze students request for financial support. A small limited number of travel grants will be available for students and young scientists unable to obtain funds from local sources. The amount of support needed should be included in the initial application. The financial aid will be given for those that attend all course activities, at the end of it.

**Application Deadline:  
Oct 20<sup>th</sup>, 2014**



**International Institute for Collaborative Cell Biology and Biochemistry:**

**EMBO-IICCBB School of Science  
From Biochemistry and Molecular Biology Approaches to Systems Biology: Bench to Bedside, Bench to the Field Course.**



**Rio de Janeiro and Búzios – Brazil  
2014, Oct 27th – Nov 7th**

**General Information:**

Airport transportation:	Taxi fares to downtown area range from US\$ 30-50 from the Rio de Janeiro International Airport – Antonio Carlos Jobim and US\$ 20 from Santos Dumont Airport.												
Travel Agency in Rio	The official tourism agency will be <a href="#">Montour</a> . Tourist services, airline tickets and hotel reservations can be obtained with <a href="#">Mr. Ricardo Clementino</a> . Phone +55 (21) 2172-0300. <b>US citizens need visa to enter in Brazil. For other citizenships please do not forget to check for visa necessities.</b>												
Hotels	<p>The Official hotels are going to make a significant discount to the meeting attendees.</p> <p><b>In Rio</b> The official hotel in Rio will be Mar Palace Copacabana Hotel (<a href="http://www.hotelmarpalace.com.br/">http://www.hotelmarpalace.com.br/</a>). The hotel rate will include room with private bathroom and air conditioned with Brazilian breakfast and Internet access included.</p> <p>Rio de Janeiro has many hotels. The typical range for a hotel in Rio’s southern zone near of the beach is US\$ 125 – 250. Cheaper hotels can be obtained (US\$ 80).</p> <p><b>In Búzios</b> The Colonna Hotel (<a href="http://www.colonnahoteis.com.br">http://www.colonnahoteis.com.br</a>) is going to be the official hotels of the Symposium. Rooms are with private bathroom, air conditioning and breakfast.</p> <p>Hotels in Búzios with breakfast can be obtained in a range of US\$ 60 – 500. Please make your reservation directly with the hotel of your choice.</p>												
Scientific program:	Scientific program and poster instruction can be obtained in later announcements <a href="http://www.unirio.br/lbp">http://www.unirio.br/lbp</a>												
Social:	The organizers are planning daily social events.												
Registration:	<p>Registration must be received from <b>Oct 1<sup>st</sup></b> to Oct 20<sup>th</sup> Registration is non-transferable. Participants will be registered for the meeting when the fees are paid in full. The registration fee will not be refunded.</p> <p><b>Note that the number of participants will be limited to 120.</b></p>												
Registration fees:	<table style="width: 100%; border-collapse: collapse;"> <thead> <tr> <th style="width: 70%;"></th> <th style="text-align: right;">Fee</th> </tr> </thead> <tbody> <tr> <td>Undergraduate student</td> <td style="text-align: right;">US\$ 80 / R\$ 200</td> </tr> <tr> <td>Graduate student</td> <td style="text-align: right;">US\$ 120 / R\$ 300</td> </tr> <tr> <td>FESBE member</td> <td style="text-align: right;">US\$ 100 / R\$ 250</td> </tr> <tr> <td>Others</td> <td style="text-align: right;">US\$ 200 / R\$ 500</td> </tr> <tr> <td>Industry</td> <td style="text-align: right;">US\$ 2000 / R\$ 5000</td> </tr> </tbody> </table>		Fee	Undergraduate student	US\$ 80 / R\$ 200	Graduate student	US\$ 120 / R\$ 300	FESBE member	US\$ 100 / R\$ 250	Others	US\$ 200 / R\$ 500	Industry	US\$ 2000 / R\$ 5000
	Fee												
Undergraduate student	US\$ 80 / R\$ 200												
Graduate student	US\$ 120 / R\$ 300												
FESBE member	US\$ 100 / R\$ 250												
Others	US\$ 200 / R\$ 500												
Industry	US\$ 2000 / R\$ 5000												



**International Institute for Collaborative Cell Biology and Biochemistry:**

**EMBO-IICCBB School of Science  
From Biochemistry and Molecular Biology Approaches to Systems Biology: Bench  
to Bedside, Bench to the Field Course.**

**Rio de Janeiro and Búzios – Brazil  
2014, Oct 27th – Nov 7th**



### **IMPORTANT DEADLINES**

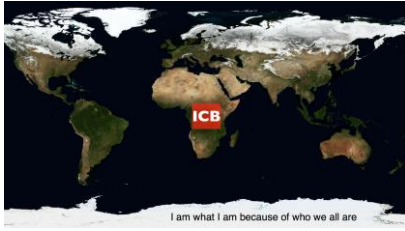
<b>Proposal submission</b>	<b>Oct 20<sup>th</sup>, 2014</b>
<b>Abstracts submission deadline</b>	<b>Oct 20<sup>th</sup>, 2014</b>
<b>Evaluation result and Notification of acceptance</b>	<b>Oct 22<sup>nd</sup>, 2014</b>



**International Institute for Collaborative Cell Biology and Biochemistry:**

**EMBO-IICCBB School of Science  
From Biochemistry and Molecular Biology Approaches to Systems Biology: Bench  
to Bedside, Bench to the Field Course.**

**Rio de Janeiro and Búzios – Brazil  
2014, Oct 27th – Nov 7th**



## **ABSTRACT SUBMISSION GUIDELINES**

### **How to submit your abstracts for EMBO-IICCBB School of science**

Abstract submission proceeds by email ([scientificcommiteeembo2014@gmail.com](mailto:scientificcommiteeembo2014@gmail.com))

Each person is permitted to submit and be first author on one scientific abstract for EMBO. You may co-author as many other abstracts as desired. If a person submits, as first author, on more than one abstract per meeting, only one abstract will be accepted; all others will be rejected.

Use the word-processing software.

Before you submit the abstract, you are strongly advised to check the spells and grammar by using the function of the word-processor.

Abstracts accepted provisionally must have the errors corrected and resubmitted by email.

Abstracts not corrected will be cancelled.

### **Abstract**

**Title:** The first letter of the title will be capitalized.

**Body:** The abstract text should not exceed 500 words (around 1 page).

Non-standard abbreviations must be written in full when first used.

**Keywords:** A list of 3-5 keywords for a subject index should be included on abstract page.

Multiple keywords should be separated by a comma.

### **Prepare all authors' information**

All authors' information should be entered as follows on the email body:

- Full Name (First Name, Last Name);
- Affiliation;
- Country;

The affiliations should be grouped by the numbers.



**International Institute for Collaborative Cell Biology and Biochemistry:**

**EMBO-IICCBB School of Science  
From Biochemistry and Molecular Biology Approaches to Systems Biology: Bench  
to Bedside, Bench to the Field Course.**

**Rio de Janeiro and Búzios – Brazil  
2014, Oct 27th – Nov 7th**



## **Presenting author's info**

The first named author must present the abstract. The presenting author will be designated as the communicating author, and all correspondence will be to the presenting author. Please enter contact information (Tel. /Fax, E-mail) in the email.

The final acceptance decision is the exclusive right of the Program Committee.

Human studies must comply with the statement regarding the use of human subjects and informed consent.

Animal studies must comply with the guidelines regarding international general rules.

## **Accessing the Abstract Submission**

Step 1. Send an email to [scientificcommiteeambo2014@gmail.com](mailto:scientificcommiteeambo2014@gmail.com) with the word document and letter of introduction of your research work (until 200 words). Please, type in the email subject: "poster abstract EMBO 2014"

Step 2. Confirm the result.

Step 3. Bring your poster printed.

## **Poster Format**

Posters should be displayed on November 2<sup>nd</sup> from 3 to 5 pm.

The author is responsible for fixing and removal of the poster on the indicated place.

Guidelines for making the poster

Poster size: Width – 90 cm // Height – 110 cm.

Use for the title font 90 pts, bold and for the subtitles font 72 pts. For auxiliary texts use font 18 pts or 20 pts. Do not forget to check spelling before final printing. The poster should be made with cord for hanging.

Organize sessions in columns for easier viewing and reading.

## **For more information:**

**Facebook: International Institute for Collaborative Cell Biology and Biochemistry  
cameron@unirio.br**